

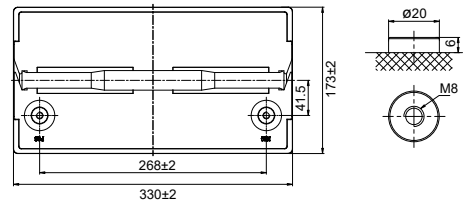
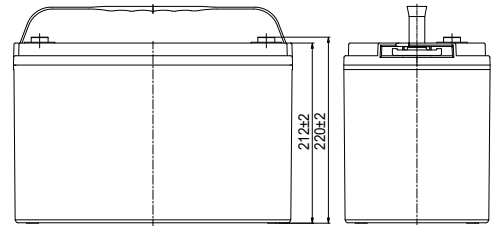
ES121200 Product Data Sheet

Issue Date: 30/07/2021

Issued By: R & J Batteries PTY LTD

Predator

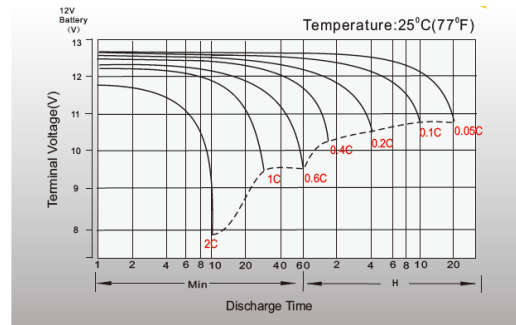
AGM BATTERIES



Specifications:

Model: ES121200	
Nominal Voltage	12V
Rated Capacity	
20 Hour Rate (6.0A to 10.5V)	120.0 Ah
10 Hour Rate (11.0A to 10.5V)	110.0Ah
5 Hour Rate (19.6A to 10.5V)	98.0Ah
3 Hour Rate (29.4 A to 10.5V)	88.2Ah
1 Hour Rate (73.6A to 9.6V)	73.6Ah
Dimension and Weight	
Length	330±2mm
Width	173±2mm
Height	212±2mm
Total Height	220±2mm
Weight	31.2kg
Casing Material	ABS
Self discharge Rate (25°C)	≥91% /3 month
Internal Resistance	Fully charged Battery ≤ 4.5mΩ
Operating Temperature Range	
Discharge	-15°C (5°F) ~ 50°C(122°F)
Charge	0°C(32°F) ~ 40°C(104°F)
Storage	-15°C(5°F)~40°C(104°F)
Charging Methods	
Float Use	13.5V~13.8V(25°C), Temp. compensation -20mv/cell/°C
Cycle Use	14.4V~ 14.9V(25°C), Temp. compensation -30mv/cell/°C
Max Charge Current	0.25C (30A)
Applications:	Solar power, Wind power, Telecom systems, UPS

Discharge Characteristics



Float Life vs Temperature

