

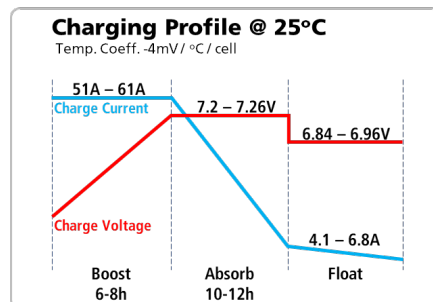
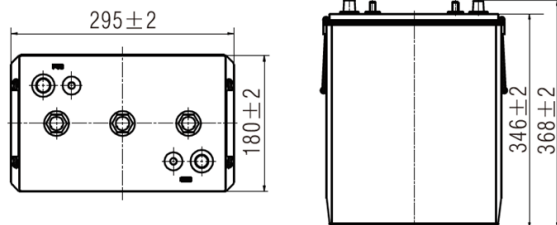
## Technical Information

The Predator ED63400 is a true Deep Cycle Absorbent Glass Mat (AGM) battery.

The grids and active material are manufactured using 99.99% virgin lead to ensure maximum performance & durability. A unique double separator configuration delivers high energy density and excellent vibration resistance.

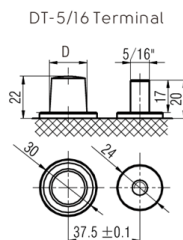
The valve regulated, non-spillable design delivers outstanding cycle life and a low self discharge rate for longer shelf life.

This battery can be used in all Industrial and Heavy Duty applications where a 6 Volt battery is required.

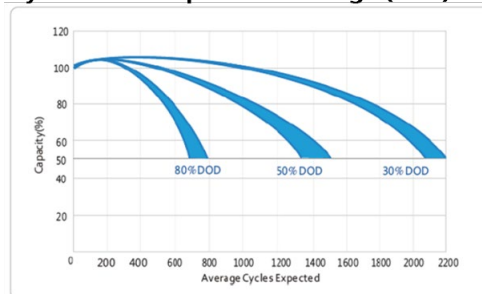


## Features & Benefits

- True Deep Cycle AGM technology
- Heavy Duty, Non-Spillable Design
- Double Separator Construction
- High Energy Density & Cycle Life
- Low Self Discharge



## Cycle Life vs Depth of Discharge (DoD)



## Technical Specifications

|                               |                   |                               |                          |
|-------------------------------|-------------------|-------------------------------|--------------------------|
| <b>Battery Type</b>           | Deep Cycle AGM    | <b>Case Material / Colour</b> | Polypropylene / Black    |
| <b>Voltage</b>                | 6V                | <b>Lid Type / Colour</b>      | VRLA / Black             |
| <b>Capacity (20Hr / 5Hr)</b>  | 340Ah / 296Ah     | <b>Plate Type</b>             | AGM Cast Grids           |
| <b>Reserve Capacity (25A)</b> | 794 minutes       | <b>Separator Type</b>         | Glass Mat                |
| <b>Reserve Capacity (75A)</b> | 232 minutes       | <b>Assembly Layout</b>        | Diagonal                 |
|                               |                   | <b>Terminal Type</b>          | Dual (SAE taper & 5/16") |
| <b>Overall Size (LxWxH)</b>   | 295 x 180 x 368mm | <b>Case Size</b>              | BCI Grp 902              |
| <b>Nominal Weight</b>         | 48.2kg            | <b>Ledges</b>                 | None                     |