

Technical Information

The Predator GC8-DT876-170 is an industrial deep cycle battery designed specifically for golf cart, scissor lift, floor scrubber and similar motive power applications.

This battery features enhanced SiO₂ – PVC Nano Grade separators for maximum performance and durability.

The proprietary design caps are have been developed to minimise water loss during use.

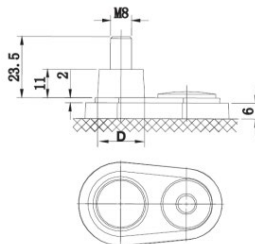
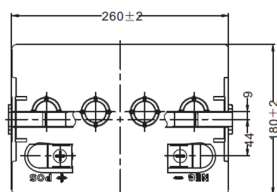
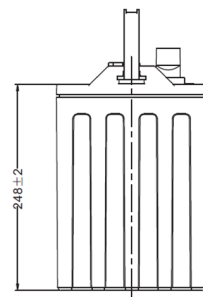
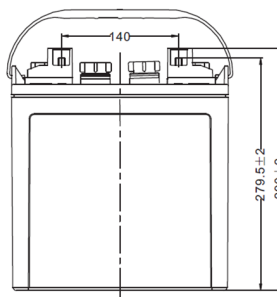
Charging

Charge Voltage: 9.8-10V

Float Voltage: 8.7V

Recommended Charge Current: 17A

Maximum Charge Current: 42.5A



Terminal		
D	Positive	19.5 ^{±0.3}
	Negative	17.9 ^{±0.3}

Features & Benefits

- Thick plates for dimensional stability
- Optimised for high cycle motive applications
- Proprietary alloy and paste composition
- Cap design reduces water consumption
- High conductivity terminals

Applications

Golf Carts

Scissor Lifts & Floor Scrubbers

Off Grid Power Storage

Technical Specifications

Battery Type	Lead Antimony Deep Cycle	Case Material / Colour	Polypropylene / Black
Voltage	8V	Lid Type / Colour	Accessible / Black
Capacity (20Hr / 5Hr)	170Ah / 145Ah	Plate Type	Cast Grids
Reserve Capacity (25A)	295 minutes	Separator Type	SiO ₂ – PVC Nano Grade
Reserve Capacity (56A)	117 minutes	Assembly Layout	LH Positive [+ -]
		Terminal Type	DT - M8 (UTL)
Overall Size (LxWxH)	260 x 180 x 279.5mm	Case Size	BCI GC8
Nominal Weight	28.2kg	Ledges	None